

Serviced offices with flexible terms and sensible rents from October 08

# ARGYLE HOUSE

Argyle House is a newly refurbished Art Deco building directly opposite the visually striking and impressive St Pancras International building. It is managed by one of London's leading enterprise incubators: Centa Business Services, and offers micro-businesses an unbeatable location plus competitive and flexible terms.

The entrance to Argyle House is a few steps from the Kings Cross underground station with access to the Northern, Hammersmith and City, Victoria, Metropolitan and Piccadilly tube lines. There are numerous bus routes nearby.



**St Pancras**  
INTERNATIONAL

Kings Cross is in London's newest cultural quarter and boasts a multitude of shops, restaurants and bars, alongside several major landmarks and tourist attractions. Its the ideal location for conferences and group meetings.



Argyle House  
29-31 Euston Road  
London NW1 2SD



ARGYLE HOUSE

All enquiries telephone James on 020 7278 5757

Managed by  centa business services

# Key features

All charges quoted are subject to VAT.

A range of 1-8 person office spaces available,  
per workstation per month from £350.00

- Furnished offices (additional furniture and accessories by agreement).
- Access 24 hours a day, seven days a week.
- Board and conference room hire.
- VOIP telephone system.
- Broadband internet connection (Cat 6 cabling)
- Optional dedicated lines available.
- Services: faxing, photocopying and scanning (see price list overleaf).
- Kitchen area on first floor.
- Offices and public areas cleaned daily.
- Business rates and utilities included.

**For all enquiries, please telephone**

**James on 020 7278 5757**

**or email: [jwalsh@centa.co.uk](mailto:jwalsh@centa.co.uk).**

## **First floor**

Suite 1 – 8 desks

Suite 2 – 4 desks

Suite 3 – 4 desks

Suite 4 – 2 desks

Suite 5 – 4 desks

Suite 6 – 2 desks

Suite 7 – 3 desks

Suite 8 – 3 desks

Suite 9 – 3 desks

Suite 10 – 2 desks

Suite 11 – 2 desks

Suite 11a – 1 desk

Hot desk rooms 1 & 2 – 1 workstation each

## **Second floor**

Suite 12 – 25 desks

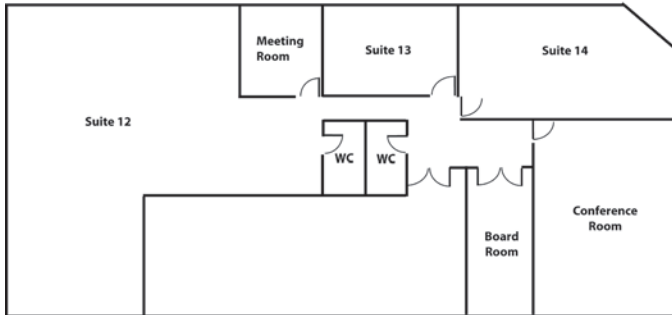
Suite 13 – 4 desks

Suite 14 – 8 desks

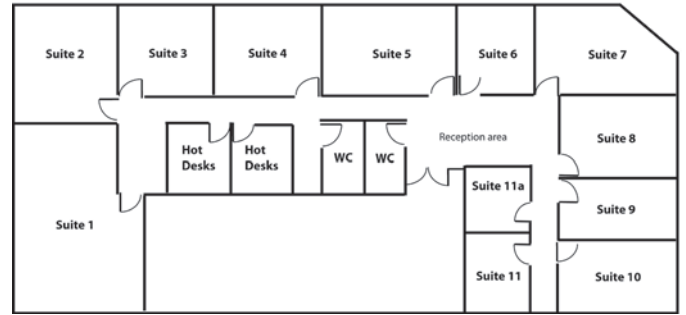
Conference Room – 50 chairs

Board Room – Board table 10 chairs

# Floor plan



First floor



Second floor

\* Floorplan approximate scale.



## Meeting rooms

### Sessions

Morning 9am-1pm and afternoon 1.30-5.30pm.

All charges quoted are subject to VAT.

### Conference room

50 persons (theatre) full day £500.00 \*  
half day £250.00

\* free use of boardroom for full day bookings

### Boardroom

1-10 persons full day £150.00  
half day £80.00  
per hour £25.00

### Megaro Argyle Room

50 persons (theatre) full day £750.00  
half day £500.00

### Megaro Copper Room

16 persons (boardroom) full day £500.00  
half day £250.00

### Catering

Tea, coffee and biscuits £2.50 per person  
Sandwiches £10.00 per person  
Buffet £15.00 per person

## IT rates

### VOIP Telecoms and Broadband

Connection fee £100.00 \*

\* includes free IT review.

### VOIP Telecoms (Monthly)

Handsets (per person) £30.00

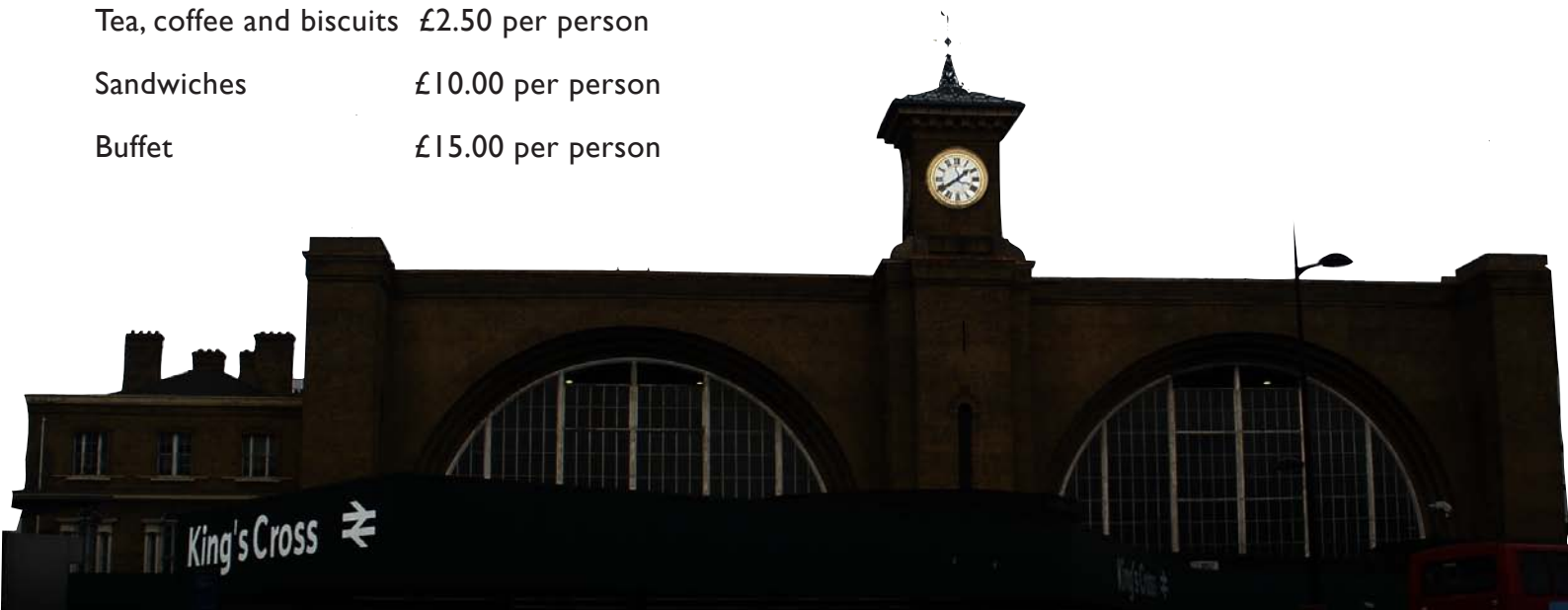
Fax line £15.00

### Broadband (Monthly)

Per person £30.00

### IT Support

Reduced rate IT support on request.



# Virtual office

## Post box / virtual office

Prestigious mailing address with private forwarding details.

Per quarter £105.00

+ redirection charges

## Limited company registration

With virtual office £100.00

Registration only £50.00

## Photocopying

High quality photocopying and printing from USB memory stick or email.

A4 black and white 10p

A4 colour 25p

A3 colour 40p

## Faxing

Sending £1.00

Receiving 12p

## Scanning

Black and white scanning to email or memory stick as PDF or Tiff files.

Per sheet £1.00

## Couriers and stationery orders

Quotes on request.

**For all enquiries, please telephone**

**James on 020 7278 5757**

**or email: [jwalsh@centa.co.uk](mailto:jwalsh@centa.co.uk).**

# How to find us

## By underground

King's Cross is the largest interchange station on the London Underground, with six connecting lines: Victoria, Piccadilly, Northern, Circle, Hammersmith & City, and Metropolitan.

## By bus

Routes 73, 214, 390, 45, 46, 30, 205, 10, 91, 476, 63, 17 and 259 all pass through Kings Cross.

## St Pancras International

For Eurostar services to Paris, Brussels and Lille.

## Euston station

The main rail gateway to the East and West Midlands, the North West, Yorkshire and Scotland.

## Kings Cross station

The southern terminus of the East Coast Main Line which runs to Edinburgh and Glasgow.

All enquiries call James on 020 7278 5757 or email: [jwalsh@centa.co.uk](mailto:jwalsh@centa.co.uk).



Argyle House  
29-31 Euston Road  
London  
NW1 2SD